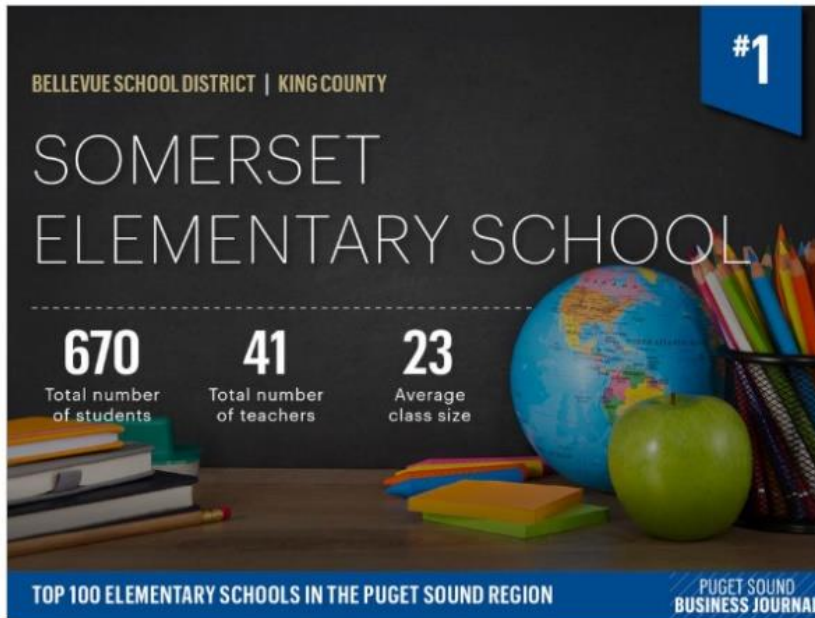


Somerset Strong News 10.9.2020

Somerset Families,



I am excited to share that Somerset has been ranked the top elementary school in the Puget Sound Region, according to a Business Journal analysis. [Link to full article](#) There are several factors that are used to determine their school rankings and they are explained in the article. We are Somerset Strong because of the partnership between our supportive community and excellent staff.

Today was a state Professional Learning Day for certificated staff. Somerset teachers had a full day of learning. Teachers in the hybrid model were trained on the health and safety protocols for return to in-person learning. Teachers in the virtual model engaged in professional learning focused on racially conscious Social Emotional Learning (SEL) in support of students. In the afternoon, all Somerset staff worked in grade level teams to look at student reading data and reviewed the Since Time Immemorial additions to the social studies curriculum. <https://www.k12.wa.us/student-success/resources-subject-area/time-immemorial-tribal-sovereignty-washington-state/elementary-curriculum>



In Partnership,

Cathy Elder

Interim Principal

Somerset Elementary



This Somerset Strong News is full of both BSD and Somerset information. Thank you for taking the time to read through it carefully.

Bellevue School District Important Information

Elementary Conferences

To be responsive to our staff's needs at this time, for the 2020-21 school year elementary educators have the option of conducting conferences on six dedicated days instead of three. Conferences may be conducted the afternoons of October 12, 13 and 14, 2020 as scheduled AND/OR November 23, 24 and 25, 2020 if those dates work better for the teacher. Each teacher will be communicating with you by the end of today with the dates they plan to conference.

During conference afternoons, students are expected to engage in independent asynchronous learning as coordinated by teachers; teachers are not expected to lead small groups on these dates so that they can focus on this important work. Educators in roles that are not directly participating in parent conferences may continue to schedule their contacts with students as needed during these times.

Health & Safety Town Hall

In the coming weeks, we will host a virtual Health & Safety Town Hall meeting for our learning community. This meeting will provide more detailed information on the [health and safety protocols](#) we will be putting in place to protect health in our learning communities once students return to in-person learning.

Save the Date:

- **Health & Safety Town Hall**, Thursday, October 15, 4 p.m. – 5 p.m., [Microsoft Teams](#)

Reunión comunitaria sobre seguridad y salud

En las próximas semanas, organizaremos una reunión comunitaria virtual sobre seguridad y salud para nuestra comunidad de aprendizaje. Esta reunión brindará información más detallada sobre los [protocolos de salud y seguridad](#) que implementaremos para proteger la salud en nuestras comunidades de aprendizaje una vez que los estudiantes regresen al aprendizaje presencial.

Aparte la fecha:

- **Reunión comunitaria sobre seguridad y salud**, jueves, 15 de octubre de 4 p.m. a 5 p.m., [Microsoft Teams](#)

健康与安全会议

在接下来的几周里，我们将为我们的学习社区举办一次虚拟的健康与安全会议。该会议将提供有关[健康和安程](#)的更详细的信息，一旦学生恢复了面对面的学习，我们将制定这些规程以保护学习社区的健康。

举办日期:

- **健康与安全会议**，10月15日，星期四，下午4点 – 下午5点，[Microsoft Teams](#)

Additional Flu Clinic Dates Added

[Flu Clinic English](#) [Flu Clinic Spanish](#) [Flu Clinic Chinese](#)

Additional dates for drive-thru flu vaccinations have been added for October.

More information is available on our [website](#).

All dates and times below are at **Odle Middle School**:

Tuesday, October 13, 2020, 10:00 a.m. to 6:00 p.m.

Wednesday, October 14, 2020, 10:00 a.m. to 6:00 p.m.

Thursday, October 15, 2020, 10:00 a.m. to 6:00 p.m.

Community Forums on Mental Health: We Need Your Feedback

In order to inform, support and empower families, the Bellevue School District is developing a series of forums on mental health to address the needs of our students and families. These virtual events are a collaboration between the district's counseling program, SEL (social-emotional learning) curriculum developers, the family engagement team and our community partners. To make these forums relevant to our students and families, we are asking Bellevue School District families to help identify topics and concerns you would like to see addressed.

Please fill out this brief [survey](#) to share your thoughts with us by Monday, October 12, 2020. Responses will be used only to shape the presentations offered.

Community Forums on Mental Health Survey

Advanced Learning Testing

The BSD Advanced Learning Department will be accepting testing applications to determine students in need of advanced learning opportunities beginning Oct. 12, 2020. Applications for advanced learning testing for students in grades 1-4 and 6-11 will be available online beginning **October 12, 2020**. District families interested in applying for testing should submit an application before the **November 30, 2020 deadline** at www.bsd405.org/apply-for-AL. Parents of BSD Kindergarten and 5th grade students do not need to apply, as these students will be considered for advanced learning services through the Kindergarten and 5th grade screening processes. Services provided for students in need include the following.

- Domain-specific services in Literacy and Mathematics (K-1)

- Domain-specific services in Literacy, Mathematics, and Nonverbal Ability (2-4 during 2020-21, and 2-6 during the 2021-22 school year)
- Self-contained services in Literacy, Mathematics, Science and Social Studies (2-12)
- Differentiated services in Literacy, Mathematics, Science and Social Studies for students identified for self-contained services, who choose to attend their neighborhood school (2-12)

To learn more about Advanced Learning Services, please visit <https://bsd405.org/services/advanced-learning/>.

Somerset Elementary News

Unity Day Assembly-October 21st

Unity Week is coming up! October is National Bullying Prevention Month, and Unity Day, a day we all wear orange to signify being united against bullying, typically falls mid-month. This year we will be celebrating kindness, inclusion, and standing up against bullying for an entire week - October 19th-23rd. Each day will have a short video and meaningful activity that students can do during the afternoon asynchronous time. Students will be encouraged to wear orange on Wednesday October 21st, the official Unity Day designated by the National Bullying Prevention Center.



Principal Birthday lunches – 12:30-1:00

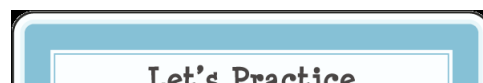


October Birthday lunch celebration will be on October 27th at 12:30. Students with an October birthday will receive a Teams invite through their student email accounts from Ruth Embaye, our office manager, the Monday prior. If you don't receive an invitation, please reach out to embayer@bsd405.org and she will send the link. Each session includes an opportunity for students to share something exciting about birthdays, a quick art project and a short story. It is a highlight for us to share this time celebrating students.

- ★ Sept. 25 – August
- ★ Sept. 29 – September
- ★ October 27 – October
- ★ November 24 – November
- ★ December 15 – December
- ★ January 26 – January
- ★ February 23 – February
- ★ March 30 – March
- ★ April 27 – April
- ★ May 25 – May
- ★ June 15 – June and July

Preparing your child for In-Person Learning

- **Mask** will be required for all staff and students to wear while at school. Please spend time now teaching your child the right to wear a mask and why it is important. Have your child wear a mask each day and build their stamina for longer amounts of time to increase their comfortability. Please practice using a 2-layer mask.
- **Hand washing** times will be scheduled throughout the day in the classroom. Start practicing this important skill at home now. <https://youtu.be/DDicJ-fSUgg> or <https://youtu.be/x3QUtQQp8W4>
- **Social distancing** in the classroom and throughout the building will be expected and enforced. Talk to your child about how providing space is a safety measure. Practice social distancing and polite ways to remind others that they are too close.



Monthly Assemblies

WOW! We have received so many student talent submissions for our assemblies. Please know that if your child got a confirmation from Flipgrid than we *have* received their talent video, and we are taking them in the order received to share in our upcoming assemblies. Your child's video will likely NOT be in the very next assembly video but will be featured in a future assembly. Thank you for your understanding – we have so many talented students!

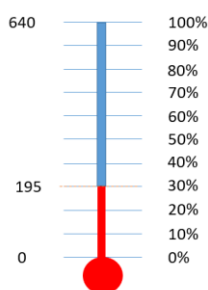
Free and Reduced Priced Meals

Please be sure to apply, or reapply, for the Free & Reduced Priced Meals Program. Through this program, families can qualify for community partner programs such as Breaktime Mealtime, Eastside Baby Corner, P-EBT, Comcast Internet Essentials, etc. Though community partners will consider economic hardship, participating in the Free & Reduced program is a starting point. Please be sure to complete the Fee Waiver, Part 5 (Sharing Information) of the application to receive family services information from the Family Connections Centers. Please apply at <https://bsd405.org/services/nutrition-services/free-reduced/>. Once you have applied please email Shannon Gregory at gregorys@bsd405.org so she can facilitate the application process.

Fall Fundraising Drive 2020-Extended to November 8th

Sharing on behalf of our Somerset PTSA

“We have raised \$44,050 with 195 donations as of today. The school participation rate is 30%. Please keep giving to make us reach the goal for 100% donation rate and make our community stronger. We really appreciate all the donations have done but still encourage more donations, because your contribution – no matter the amount – makes a big difference to our children especially this year!



Somerset PTSA spends \$150K in GSA to assist teachers in classes. The cost will be \$234 per student (640 students). We all know the private school has a low ratio of teacher and students. As a public school, Somerset PTSA is willing to spend such a big expenditure to hire more GSA hours to lower the ratio. The school is preparing to reopen gradually and the GSA will play an important role in helping teachers in many ways. We support our teachers by providing \$300 classroom supplies each year. Also each year we have a budget of \$2000 for library to have more books. For past years, we spent more than \$40,000 yearly in curriculum enhancement such as

field trips, in-house activities and guest speaker. We will still do it as long as school life gets normal.

As you can see, we had a joyful ice cream social last week. The math and chess programs already started. All volunteers are working hard to make it happen. We are more difficult this year but Somerset PTSA and all volunteers will not be stopped by anything. More events will come back once allowed.

We need you to participate and donate in any amount are meaningful and appreciated. All the money comes from you will back to your kids. Let us work together to reach our goal.

OCTOBER IMPORTANT DATES

- 9th Professional Learning Day for teachers, No School for students
- 12-14 Early Release Days for Elementary Parent Teacher conferences
- 21st Unity Day Assembly Wear Orange
- 27th Principal Birthday Lunch

For more information and important dates please follow this link to our Somerset PTSA: [Link to Somerset PTSA](#)

Cathy Eld

